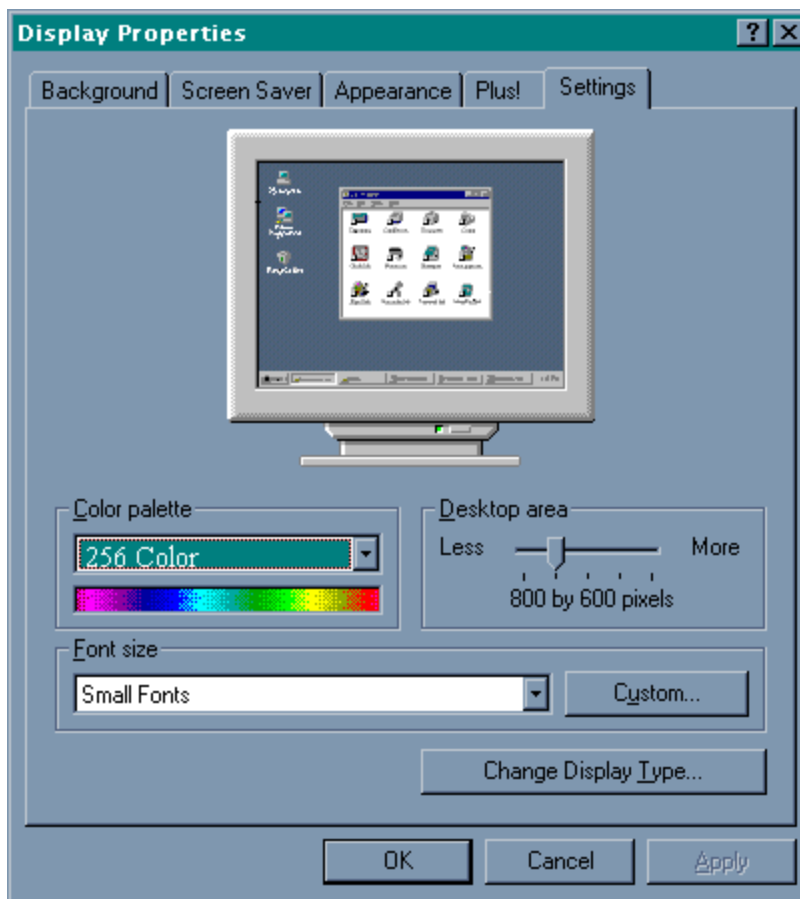


Color Settings

This game utilizes the Direct Draw libraries of Microsoft's DirectX. Some video cards do not yet have driver support for Direct Draw. However, updated drivers are being developed by manufacturers to remedy this problem. To obtain information on these updates, contact your [Video Card Manufacturer](#) and download their latest Windows 95 drivers for your video card. If you are not sure about your video card or its capabilities, please refer to the section called [Check Your Display Type Settings](#) for more information or contact your [Video Card Manufacturer](#).

Interstate '76 Arsenal Demo requires that your system be set to at least 16-bit color Mode. [Click here](#) to go the Display Properties window to adjust your settings.



If you choose to make this change at some other time, you can always return to this Help file and try again or follow the steps listed below to access these settings.

1. Place your mouse cursor over an empty area of your desktop and click the right button on your mouse. At the bottom of the list that appears, click on **Properties**. This will bring up the Display Properties window. You can also bring this window up by clicking on the **Display** icon in the Control Panel.
2. Choose the **Settings** tab and change the color setting to 16-bit color.

Common Audio Problems

Most sound card problems are remedied by obtaining newer sound card drivers. This is highly recommended and easy to do. You can contact your [Sound Card Manufacturer](#) for details.

General:

[Installing a new sound card.](#)

[I just installed a new sound card. Why am I not hearing any sound?](#)

[Checking your sound card for conflicting settings.](#)

[I have only partial or no sound when running the game.](#)

[I have a Diamond Telecommander sound/modem card and it does not work with the game.](#)

[I have a Packard Bell with little and/or no sound when playing the game.](#)

[I have an Advanced Gravis UltraSound ACE and I am experiencing severe lock-up problems.](#)

[Why is the sound fuzzy on my Sound Blaster Pro 2 sound card?](#)

Common Input Device Problems

Game Specific:

Joystick does not work in the game

General:

General Troubleshooting for Joysticks and Game Pads

Joystick Calibration

Mouse

Common Troubleshooting Tips for General Issues

Can I run *Interstate '76 Arsenal Demo* on Windows 3.1, Windows NT or OS/2?

My screen saver runs really slow when the game is running.

Power Saver Functions

Ctrl-Alt-Del locks up my system.

How can I improve performance?

Common Video Card Problems

Most video card problems are remedied by obtaining newer video card drivers. This is highly recommended and easy to do. Contact your [Video Card Manufacturer](#) for details.

[How do I set my display for 16-bit color?](#)

[The images are very choppy and slow while playing the game.](#)

[I installed a new video card, and the game doesn't look right.](#)

[When I launch the game from the title screen or from the taskbar, my screen stays blank and the game doesn't start.](#)

[Game graphics are faded and/or strange in appearance.](#)

[The fonts are too large and/or extend off the screen.](#)

Direct 3D

Direct 3D is the part of the Microsoft DirectX API (Application Programming Interface) set that allows a game to directly access the enhanced features of 3D graphics hardware under Windows 95. A game like *Interstate 76 Arsenal* that supports Direct 3D will automatically detect and utilize the 3D graphics acceleration features of your computer's hardware, as long as your hardware supports Direct 3D and the correct device drivers are installed. This makes it easier for game companies and 3D acceleration card manufacturers to ensure their products will work together. Because Direct3D is relatively new, make sure your video drivers are the most current versions available from your hardware manufacturer to ensure compatibility.

DirectX 5

Interstate '76 Arsenal Demo requires DirectX 5. If you do not already have DirectX 5 already installed on your system, please visit the [Microsoft website \(www.microsoft.com\)](http://www.microsoft.com) to download the necessary files.

Who makes DirectX and how can I contact them?

Microsoft created DirectX. If the answer to your questions are not found on this page, you may want to contact Microsoft via mail at:

Microsoft Customer Sales and Service
One Microsoft Way
Redmond, WA 98052-6399, USA

Microsoft can also be reached in the USA at (800) 426-9400 or internationally at +1(206) 882-8080.

What is DirectX and why do I need it?

Microsoft DirectX 5 is an API (Application Programming Interface) that increases the speed at which games play under the Windows 95 operating system. These APIs allow direct access to the enhanced features of hardware under Windows 95. With DirectX 5, a program has instant access to the hardware, allowing for great advances in graphics, sound, video, 3-D, and network capabilities of games.

Since Windows 95 and DirectX 5 are relatively new in the computer world and have not achieved compatibility with some older video cards, many manufacturers are releasing updated drivers for Windows 95 to meet the DirectX standard. If you are not sure about your video card's compatibility, consult the company that makes your video card.

If the Microsoft DirectX Installer does not detect DirectX 5 on your computer, it will install DirectX 5 for you. After installation is complete, you will need to restart your computer in order for DirectX 5 to take effect.

If you have other Windows 95 games on your computer, chances are you already have an earlier version of DirectX installed on your computer. In this case, the Microsoft Installer will overwrite that version with DirectX 5. The DirectX installation process will then be complete. You will need to restart your computer for the changes to take effect.

If you already have DirectX 5 installed on your computer, the Microsoft DirectX 5 installer will detect it and not overwrite any DirectX 5 files. In this case, you will not need to restart your computer after installation in order to run the game.

DirectX 5 should not affect any titles designed for the earlier versions of DirectX. Should you encounter difficulties with DirectX 5, please contact Microsoft for further information.

How do I check to see if my computer supports DirectX?

1. Place the disc in the CD-ROM drive and exit from any autoplay screens.
2. Double-click **My Computer**.
3. Right-click your CD-ROM drive and choose **Install DirectX**.

If any of the components of DirectX are not certified, please call your hardware manufacturer for the updated drivers that support DirectX.

I am having problems with running the game and think it might be related to my Direct X installation. What should I do?

If you experience problems running the game, try turning off the "Enable 3D Acceleration" option in the DirectX setup program. To disable 3D Acceleration, double-click the dxsetup icon located in **Program Files\DirectX\Setup**. Uncheck the option for 3D acceleration in the middle of the DXSetup window.

I have heard DirectX is not compatible with some video cards. What can you tell me about this?

Windows 95 and DirectX are relatively new in the computer world and have not achieved compatibility with some older video cards. Many manufacturers are releasing updated drivers to meet the DirectX standard. If you are not sure about your video card's compatibility, consult the [Vendor List](#) for the company that makes your video card.

If I don't have DirectX, will the game install it for me?

Yes. If the Microsoft DirectX Installer does not detect DirectX on your computer, it will install it for you. After installation is complete, you will need to restart your computer in order for DirectX to take effect.

How do I restore my video and/or audio drivers once DirectX has been installed?

1. Place the disc in the CD-ROM drive and exit from any autoplay screens.
2. Double-click **My Computer**.
3. Right-click your CD-ROM drive and choose **Install DirectX**.

Choose the button that fits your need (e.g. **Restore Audio drivers**). This process will install your previous drivers and prompt you to restart Microsoft Windows.

Problems Relating to Specific Video Cards

The following manufacturers suggest running DirectX 5 with their products using the configurations listed below. If you need further assistance, please contact your video card manufacturer directly.

Diamond Multimedia

Stealth SE

Stealth 64 Graphics 2000

Stealth 64 Video 2000

Stealth 64 Video 3000

Stealth Video 2001

Stealth Video 2001\TV

Stealth Video 2500

Stealth 3D 2000

S3 Trio 64V+ (Images will appear very dark on some monitors when using this card)

If problems are encountered with the above Diamond Multimedia video cards, we recommend that you restore your video card drivers. Instructions are as follows:

1. Place the game disc in the CD-ROM drive and exit from any autoplay screens.

2. Double-click **My Computer**.
3. Right-click your CD-ROM drive and choose **Install DirectX**.
4. Click the button labeled **Restore Video drivers**.

Matrox Graphics

Matrox Millennium

Matrox Mystique

The Matrox Millennium card may not support the current version of Direct3D acceleration (which is enabled by DirectX by default). Even if the game does not use Direct3D, this card may have problems due to Direct3D being enabled. You can disable this feature from within the DirectX setup menu.

Please follow these instructions to do so:

1. Place the game disc in the CD-ROM drive and exit from any autoplay screens.
2. Double-click **My Computer**.
3. Right-click your CD-ROM drive and choose **Install DirectX**.
4. Click on the box labeled **Direct3D Hardware Acceleration Enabled** to make this box should be empty. This will disable Direct3D.
5. Click **OK**.

At the time of creating this file, Matrox Mystique drivers version 3.70 were not 100% DirectX 5 certified. We recommend you contact Matrox for the most current DirectX 5 compatible drivers for this card. You may also try using driver version 3.63 with this card. If problems persist contact [Matrox Graphics Inc.](#) for assistance.

STB Systems

Powergraph 64 using Vision 95

We have experienced numerous problems with STB video cards running the STB Vision 95 set of display tools. If you experience any problems playing the game, please uninstall your STB Vision 95 display tools by reinstalling the STB drivers **without** the STB Vision 95 display tools .

ATI Technologies

Mach 64

If you experience problems running with an ATI Mach 64, click the **Start** Button and select **Run**, then type SYSTEM.INI. Click **OK**.

Locate the section within the file labeled
[Display]

and add the line STRETCHENGINE=0

Example:

```
[Display]
STRETCHENGINE=0
```

Click **File** and choose **Save**. Then click **File** and choose **Exit** to leave your System Configuration editor. Reboot the system and try playing the game again.

Contact your [video card manufacturer](#) directly for further support or driver updates.

Game Controls

Driving

Accelerate	Numpad Up	Joystick Forward
Brake	Numpad Down	Joystick Back
Steer Left/Right	Numpad Left/Right	Joystick Left/Right
Emergency Brake	Z	
Reverse	Tab	
Shift Up	. (Period)	
Shift Down	, (Comma)	

Radar

Radar Range	R
Target Nearest Enemy	T
Target Next Enemy	E
Cancel Target	Y
Target Under Reticle	Q

Weapons

Fire Weapon	Space Bar	Joystick Button 1
Cycle Weapon	Enter	Joystick Button 2
Link Similar Weapons	L	
Fire Hardpoint 1	1	
Fire Hardpoint 2	2	
Fire Hardpoint 3	3	
Fire Hardpoint 4	4	
Fire Hardpoint 5	5	
Aim Handgun	Arrow Key Left/Right	Joystick Left/Right

Views

Glance Down (View Dash)	Arrow Key Up	Joystick Hat Up
Glance Left/Right	Arrow Key Left/Right	Joystick Hat Left/Right
Glance Back	Arrow Key Down	Joystick Hat Down
Toggle V-Pit/G-Pit	F1	
External Cam Forward	F2	
External Cam Rear	F3	
External User to Target View	F4	
External Target to User View	F5	
No Cockpit	F6	
Fender Cam Front	F7	
Fender Cam Rear	F8	
Beauty Shot Front	F9	
Satellite View	F10	
Look at Target	0 (Ins)	
Quick View	V	

Zoom In (External Cam)
Zoom Out (External Cam)
Toggle Rearview Mirror
External Instrument Displays

Page Up
Page Down
~
) and [

Other

Horn
View Map
View Notepad

G
M
N

Pause Game
Exit Game

Pause
Esc

How to Start the Game

If you are playing the downloadable Internet version, double-click on Arsenal.exe in the directory to which you unzipped the demo.

Otherwise, click **Start**→**Programs**→**Interstate '76 Arsenal Demo**→**Play I'76 Arsenal Demo**.

Introduction

Welcome to the *Interstate '76 Arsenal Demo*, which features one mission from the new *Interstate '76 Gold Edition* and one mission from the *Interstate '76 Nitro Pack*. Both games will be included as part of *Interstate '76 Arsenal*, available in retail stores in February 1998. The *Arsenal* contains two action-packed games - check out the [reviews!](#)

Interstate '76 Gold Edition

Experience all of the original Interstate '76 missions, cars and weapons for the first time with...

- 16-bit 3D hardware acceleration!
- Optimized engine for much-improved framerate!
- Enhanced graphics featuring new terrain, horizon and sky textures!
- Difficulty levels!
- Hack prevention!

Nitro Pack for Interstate '76

Unlike any expansion pack you've ever seen, the *Nitro Pack for Interstate '76* delivers far more than your typical addon pack. Check out the all-new features...

20 new single-player missions!

- Innovative mission objectives in a variety of new settings!
- Detailed scenarios feature all-new voiceovers by returning I'76 characters as well as many new ones!
- Unlock bonus missions once you complete the main mission sets!
- Take on the role of your favorite characters -- Taurus, Jade and Skeeter -- from *Interstate '76!*

30 new multi-player maps!

- New game types including Capture The Flag and Racing!
- Maps designed specific to game type!
- New host options including weapon restrictions, password entry and the ability to set maximum kills, minutes, score, laps and captures!
- Hack prevention – vehicles are validated before they even enter the game!

Several overall enhancements!

- 16-bit 3D hardware acceleration!
- Enhanced graphics including new terrain, horizon and sky textures!
- Optimized engine for screaming framerates!
- New tricked-out muscle cars like the Ransom Marshal, Courcheval Hacienda and Dover Rampage!
- New novelty vehicles including a hearse, limousine, ambulance and ice cream truck!
- Devastating new weapons including the chemical mortar, caltrops, 4Get-U-Not missile and Ball O'Flame!

**THE NITRO PACK IS A STAND ALONE EXPANSION PACK
AND DOES NOT REQUIRE *INTERSTATE '76* TO PLAY!**

**ALSO INCLUDES OPTION TO UPGRADE YOUR CURRENT
VERSION OF I'76 TO INCLUDE THE GOLD
EDITION ENHANCEMENTS!**

HOW DO I GET THE *NITRO PACK FOR INTERSTATE '76*?**

- **IN RETAIL STORES** – The Nitro Pack is included in the *Interstate '76 Arsenal* along with the *Interstate '76 Gold Edition*!
- **DIRECT FROM ACTIVISION** – You can also order the *Nitro Pack for Interstate '76* directly from Activision!

Pre-order the Nitro Pack before February 15, 1998 and save \$7.00!

Reserve your copy PRIOR TO FEBRUARY 15, 1998 and get \$7.00 OFF the cost of the Nitro Pack! You'll get the Nitro Pack for \$25.00 (\$19.00 plus \$6.00 shipping and handling) sent directly to you as soon as the game is available in February. Order after February 15, 1998 and the Nitro Pack will be \$32.00 (\$26.00 plus \$6.00 shipping and handling). So order now!

To pre-order or order the Nitro Pack, call TOLL FREE 1-888-640-9292 and use your Visa, MasterCard or American Express Card. Your credit card will not be billed until we ship your game. Valid only in the USA and Canada. Pre-orders will be taken on or before February 15, 1998 and regular orders will be taken after February 15, 1998.

Joystick does not work in the game

If your joystick does not respond in the game, it probably needs to be calibrated in Windows 95. You must setup your joystick/gamepad in the Windows 95 Control Panel. Click **Start** on the taskbar, then **Control Panel**. Then click **Game Controllers**. From here you can choose and calibrate your controller. If your controller does not appear on the list of available controllers, you must get the drivers from the manufacturer.

Minimum System Requirements for *Interstate '76 Arsenal Demo*

The *Interstate '76 Arsenal Demo* is a 3D accelerated demo only. It requires one of the following Direct 3D compatible 3D accelerated video card properly installed on your system: 3Dfx, Rendition, ATI and Nvidia (PowerVR will be supported in the final release). You will also need the latest drivers from the video card manufacturer. Because this demo is a pre-release version of the game, you may experience compatibility problems related to your hardware or graphical anomalies. We are currently in the process of all known compatibility bugs.

- 100% Microsoft Windows 95 compatible computer system (including compatible 32-bit drivers for CD-ROM drive, video card, sound card and input devices)
- Pentium 133 MHz
- U.S. version Microsoft® Windows 95 operating system
- RAM: 32 MB
- 37 MB of uncompressed free hard drive space
- VESA Local Bus or PCI Video with 1 MB RAM
- 16-bit color
- 100% Sound Blaster 16 compatible sound card
- 100% Microsoft-compatible mouse and driver

Interstate '76 Arsenal Demo uses Microsoft DirectX 5 technology and requires that your system have the most updated drivers that fully support DirectX.

[Click here](#) if you have a NexGen Pentium compatible processor or [click here](#) if you have a Cyrix 686 processor and are receiving a warning message during the install process.

Reviews

PRAISE FOR ***INTERSTATE '76***

- 1997 GAME OF THE YEAR – GQ Magazine
- 1997 ACTION GAME OF THE YEAR – Video Game Advisor
- 1997 ACTION GAME OF THE YEAR – Gamesmania
- 1997 RUNNER-UP ACTION GAME OF THE YEAR – PC Gamer
- EDITOR'S CHOICE AWARD – PC Gamer
- 1997 SPECIAL ARTISTIC ACHIEVEMENT AWARD – Computer Gaming World
- SPECIAL ACHIEVEMENT IN CINEMATICS and MUSIC – PC Gamer
- 1997 BEST MUSIC AWARD – Adrenaline Vault
- 1997 BEST GAME SOUNDTRACK – GamePro
- 1997 EDITOR'S CHOICE AWARD BEST SOUNDTRACK – PC Games
- 93% Rating – PC Gamer
- 4 1/2 Stars – CGW
- "Interstate '76 is a rare joy—a game positively overflowing with solid ideas and great gameplay." – Computer Gaming World
- "Interstate '76 is an action game with attitude... If you're a fan of classic American sports cars, motorized mayhem... or just good gaming, you'll flip for Interstate '76." – PC Gamer
- "Strap on your seatbelt, turn up the 8-track, and get ready for one helluva cool ride." – PC Games
- "... everything Interstate '76 does, it does well." – CNET (gamecenter.com)
- "Interstate '76 was designed by Activision's MechWarrior 2 team and the pedigree shows." – CGW
- "GET THIS GAME!!!" – Gamespot Player Review

EARLY PRAISE FOR ***INTERSTATE '76 NITRO PACK***

- "The Interstate '76 Nitro Pack is a total package - great graphics, action-packed gameplay, an engaging storyline and another grooving soundtrack... a sure-fire winner" – Adrenaline Vault
- "All in all this is a beautifully refinished game... it performs well beyond expectations... You can confidently look forward to another funkified and furious spring." – Electric Playground
- "The folks at Activision found wild success with I'76; this time they have to contend with wildly high expectations. But if the gods of bell-bottoms and carburetors smile down from on high, I'76 Nitro Pack... will be the best in its class." – GameSpot
- "... the Nitro Pack delivers exactly what players want: funk-inducing style with metal-pulverizing bullet holes that makes this Pulp Fiction for gamers." – Gameslice
- "All in all, the Nitro Pack looks like an excellent addition for any auto-vigilante, and offers a host of options and values... above the average mission pack." – PC Gamer Online
- "Just when you thought the T.R.I.P. was over, Activision delivers a new double-barreled stand-alone expansion product." – bURNT
- "Players begging for more Interstate '76 action can now have their fix with this much improved add-on disc." – Videogame Advisor

Supported Operating Systems

This game supports one operating system at this time: Microsoft Windows 95. The following operating systems are not supported:

MS-DOS 6.22

MS-DOS Mode 7.0

Microsoft Windows NT

IBM OS/2 (all varieties)



[Introduction](#)

[Minimum System Requirements](#)

[How to Start the Game](#)

[Game Controls](#)

[Troubleshooting Topics](#)

[Vendor List](#)

Troubleshooting Topics

Activision thoroughly tests its games on a variety of systems before they are released, but it is virtually impossible to test on all combinations of software and hardware. Many of the issues you may encounter in Windows 95 are caused by device drivers for video cards, sound cards, and CD-ROM drives that are not fully compatible with the Windows 95 operating system and/or DirectX. The following troubleshooting tips are intended to assist you in solving some of the common issues that occur with the Windows 95 operating system and the game.

[Audio](#)

[Autoplay](#)

[DirectX](#)

[General Issues](#)

[Input Devices](#)

[Video](#)

